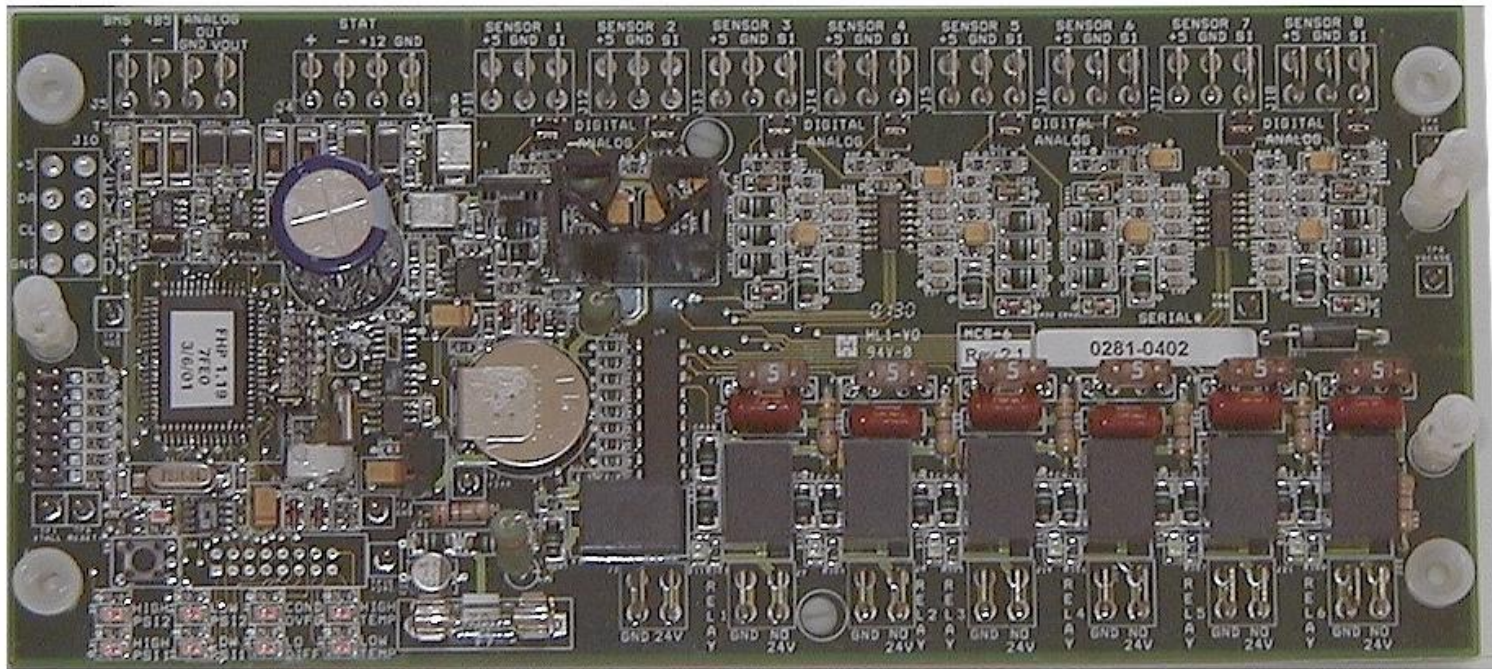




MCS-6 Unitary Controller



◆ Product

- Primary Control (No mechanicals)
- Design Economics for One or Two Compressors
- Seven Options (Jumper selectable)
- MCS-6
 - 6 Relay Outputs (24vac)
 - 8 Sensor Inputs, Analog or Digital (0 to 5vdc)
 - 1 Analog Output
 - 1 Communicating Thermostat RS-485 port
 - 1 RS-485 High speed Front End Information Control Sys

◆ MCS-6

- Four Layer Printed Circuit Board
- .093 Printed Circuit Board Thickness
- Power Plane & Ground Plane
- 24vac Input Power Fused 5 x 20 mm (2 amps)
- RS-485 Communications 6000'
- Extended temperature range (-40° to +175°F)

◆ Relay Outputs

- 5 amps @ 24vac
- Automobile Fuses
- Snubbers on all outputs
- Green LED on each Relay Output
- Common & Normally Open Terminals

◆ **Sensor Inputs**

- Universal (Analog or digital)
- Push on staycon terminals
- Individual zener diode protected
- Berg jumper for analog or digital

◆ Analog Output

- 0 to 10 Vdc
- Push on staycon terminals

◆ +12vdc Output

- Push on staycon terminals

◆ Communications

- 1 RS-232 communicates @ 19,200 baud
- 1 STAT communicates @ 4,800 baud (RS-485)
- Modem communicates @ 14,400 baud

(Automatic error recovery & data compression, uses RS-232)

- Bacnet
- Modbus
- Lonworks
- JC N2
- Automated Logic
(RS 232 = 50', RS 485 = 6000')

◆ Misc Items

- **Clock**

- ◆ Real Time Clock

- ❖ Normally powered from AC
 - ❖ Powered from battery when AC not available

- ◆ Battery

- ❖ Lithium Ion battery
 - ❖ Will power clock for over 50 years

- **8 Individual Red Alarm LED's**

◆ MCS-6 Standard Relay Outputs

- Fan
- Compressor 1
- Reversing Valve

◆ MCS-6 Jumper Selectable (3) Relay Outputs

- Compressor 2
- Auxiliary Heat
- Emergency Heat
- Economizer
- Hot Gas Reheat
- Heat Reclaim Pump
- Outside Damper

◆ SAFETIES / LOCKOUTS

ITEM	TYP VAL	TYP TME	SAFETY	LOCKOUT
HI DISC PSI	380	2 SEC	YES	YES (2X - 1HRS)
LO SUCT PSI	30	90 SEC	YES	YES (2X - 1HRS)
COND OVFL	-	10 SEC	YES	YES (2X - 1HRS)
HI H2O IN TMP	100	120 SEC	YES	YES (2X - 1HRS)
LO H2O OUT TMP	35	120 SEC	YES	YES (2X - 1HRS)
LO DIFF TEMP (SUPPLY AIR)	6	120 SEC	YES	YES (2X - 1HRS)

MCS Windows Front End System

- ◆ MCS-8 Loop Control System (Cooling tower control, etc.)
- ◆ MCS-8 Building Control System (Lighting, water heaters , etc.)
- ◆ MCS-6 WATER SOURCED Heatpump Controller
- ◆ Windows based Communications System
 - System Info Summary Status all Units
 - Detail Info Status Individual Units
 - Local or Remote Communications