

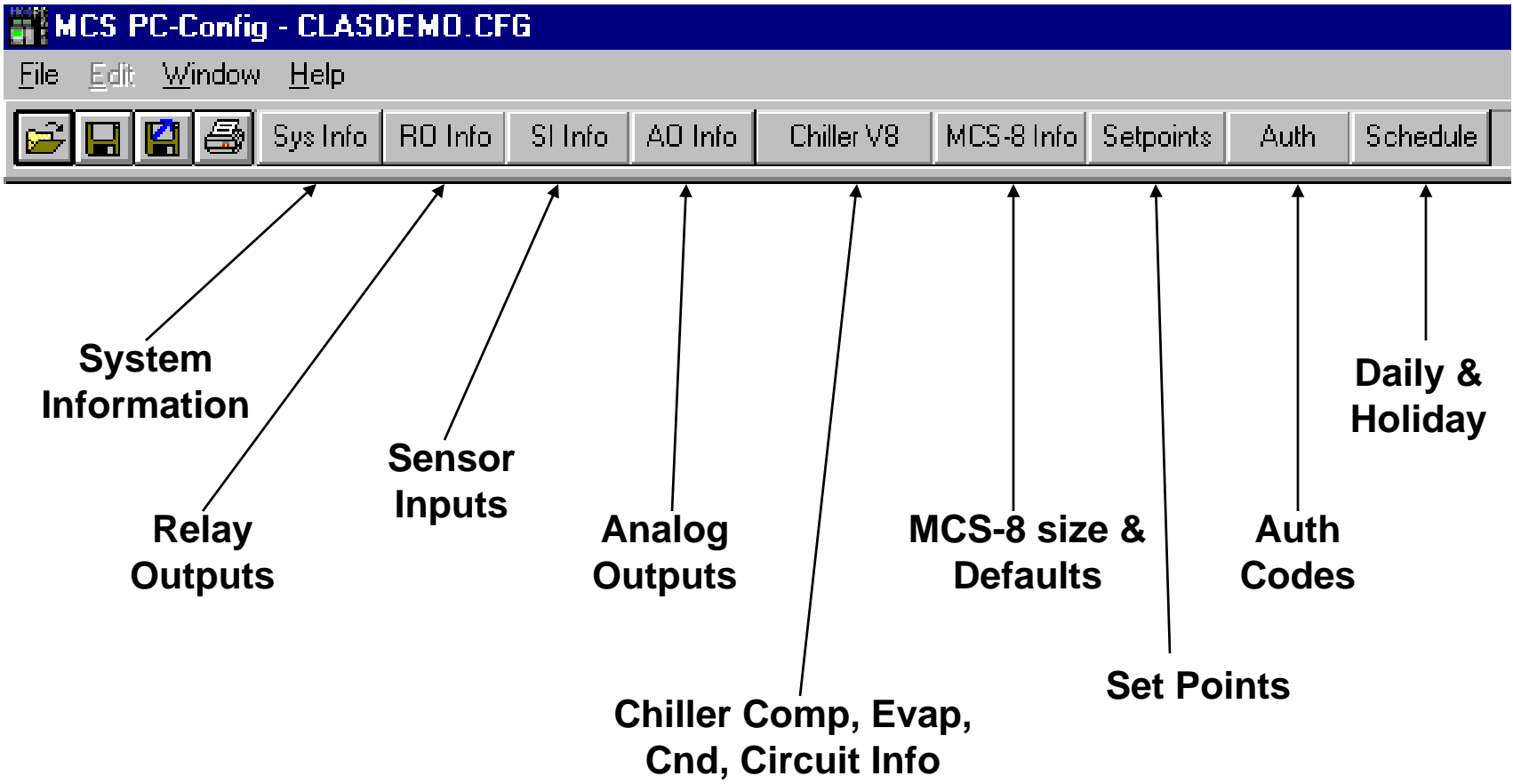
Using PC-Config

Visit us at www.mcscontrols.com





◆ PC-Config General Information

- Windows® based (3.1, 95, 98, ME, NT, 2000, XP)
- Software written in Visual Basic
- Point & Click
- Drop down list
- Start with a basic system

◆ PC-Config Selections



◆ System Information

				Sys Info	RO Info	SI Info	AO Info	Chiller V8	MCS-8 Info	Setpoints	Auth	Schedule
System Information Screen												
Name	DEMO	Config Month	3									
Company Name	MICRO CTL SYS	Config Day of Month	31									
Model Name	HITACHI SCREW	Config Year	2									
Install Date Month	2	Config Hour	17									
Install Date Day	4	Config Minute	0									
Install Date Year	2	Load Month	3									
Serial Number	AC-12345	Load Day of Month	31									
Config Version	6	Load Year	2									
Config Type	106 Chiller V8 CFG	Load Hour	17									
Model Number	90	Load Minute	0									
The Date and Time this file was last modified was on 3/31/2 at 05:26 PM												

◆ Relay Outputs

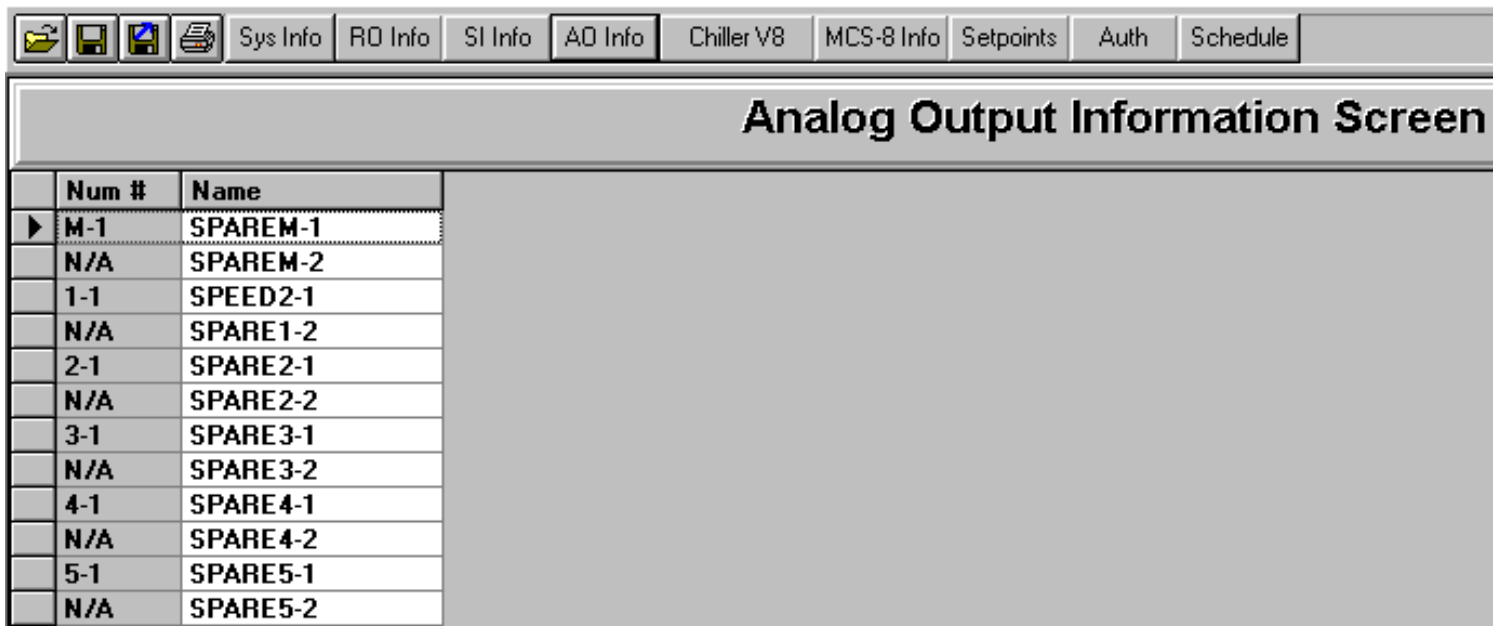
Relay Output Information Screen

	#	Name
▶	M-1	COMP1
	M-2	LOAD1
	M-3	UNLOAD1
	M-4	S UNLD1
	M-5	LLS1
	M-6	FAN1
	M-7	FAN2
	M-8	ALARM
	1-1	SPARE1-1
	1-2	SPARE1-2
	1-3	SPARE1-3
	1-4	SPARE1-4

◆ Sensor Inputs

Sensor Input Information Screen										
SSDBGrid1										
#	Name	Display Type	Offset	Manual Value or Digital Wiring	Display Text	Setpoint Index	Temperature sensor	Humidity Sensor	Auto Manual	
▶ M-1	SUCT1	TI-500	0	0	Not Used	Not Used	Not Used	Not Used	Auto	
M-2	DISC1	TI-500	0	0	Not Used	Not Used	Not Used	Not Used	Auto	
M-3	AMPS1	CT-250	0	0	Not Used	Not Used	Not Used	Not Used	Auto	
M-4	SUCTTMP1	MCST100	0	0	Not Used	Not Used	Not Used	Not Used	Auto	
M-5	DISCTMP1	MCST100	0	0	Not Used	Not Used	Not Used	Not Used	Auto	
M-6	PMPDOWN1	DIGITAL	Not Used	Norm. Closed	Yes, No	Not Used	Not Used	Not Used	Auto	
M-7	FLOW	DIGITAL	Not Used	Norm. Open	Yes, No	Not Used	Not Used	Not Used	Auto	
M-8	LEV LIQ	MCST100	0	0	Not Used	Not Used	Not Used	Not Used	Auto	
1-1	SPARE1-1	SPARE	0	0	Not Used	Not Used	Not Used	Not Used	Auto	
1-2	SPARE1-2	SPARE	0	0	Not Used	Not Used	Not Used	Not Used	Auto	
1-3	SPARE1-3	SPARE	0	0	Not Used	Not Used	Not Used	Not Used	Auto	
1-4	SPARE1-4	SPARE	0	0	Not Used	Not Used	Not Used	Not Used	Auto	

◆ Analog Outputs



The screenshot displays a software interface for 'Analog Output Information'. At the top, there is a navigation bar with icons for file operations and several menu items: Sys Info, RO Info, SI Info, AD Info (highlighted), Chiller V8, MCS-8 Info, Setpoints, Auth, and Schedule. Below the navigation bar is a title bar for the 'Analog Output Information Screen'. The main content area contains a table with two columns: 'Num #' and 'Name'. The table lists 14 rows of data, with the first row selected.

Num #	Name
M-1	SPAREM-1
N/A	SPAREM-2
1-1	SPEED2-1
N/A	SPARE1-2
2-1	SPARE2-1
N/A	SPARE2-2
3-1	SPARE3-1
N/A	SPARE3-2
4-1	SPARE4-1
N/A	SPARE4-2
5-1	SPARE5-1
N/A	SPARE5-2

◆ Chiller V8 Information - Part 1

Chiller 8V Information Screen

General Information

# of Circuits 1 ▼	# of Steps 1 ▼	Run/Stop Switch Not Used ▼	Phase Loss Not Used ▼	Ambient Temperature Not Used ▼
Network Run/Stop Sw Not Used ▼	Emergency Stop Switch Not Used ▼	Target (SP #1) Reset Not Used ▼	Alarm Output ALARM ▼	
Control Temperature On <input type="radio"/> Entering Tmp <input checked="" type="radio"/> Leaving Tmp	Control Method <input checked="" type="radio"/> Control Zone <input type="radio"/> Volt SI	MOD Motor Limit RO Not Used ▼	Warning Relay Not Used ▼	
Control Relay Not Used ▼				

Compressor Information

Compressor Type Hitachi Screw ▼	Continuous Pump Dwn <input type="radio"/> Yes <input checked="" type="radio"/> No	Anti Cycle Last: <input checked="" type="radio"/> ON <input type="radio"/> OFF
------------------------------------	--	---

All S/W 8.00-Q and greater Anti-cycle is controlled by setpts 59 and setpt 63. Anti-Cycle Option is ignored.

◆ Chiller V8 Information - Part 2

Evaporator Information			
Refrigerant Type R22	Entering Temperature Not Used	Leaving Temperature LEV LIQ	
Flow Switch FLOW	Barrel Heater Relay Not Used	Pump #1 Relay Not Used	Pump #2 Relay Not Used
Process Pump Relay Not Used	Recir Modulating ByPass Not Used	Process Temperature Not Used	

Condenser Information			
Condenser Type RO Step Individual	Starting Cond RelayOutput Not Used	# of Cond Stages 0	AO Modulating Valve Not Used

◆ Chiller V8 Information - Part 3

CIRCUITS						
	Circuit #	Num of Compressor ROs	Starting Compressor RO	Num of Condensor ROs	Starting Condensor RO	Vi Sensor
▶	1	5	COMP1	2	FAN1	Not Used
	2	0	Not Used	0	Not Used	Not Used
	3	0	Not Used	0	Not Used	Not Used
	4	0	Not Used	0	Not Used	Not Used
	5	0	Not Used	0	Not Used	Not Used
	6	0	Not Used	0	Not Used	Not Used
	7	0	Not Used	0	Not Used	Not Used
	8	0	Not Used	0	Not Used	Not Used

◆ Chiller V8 Information - Part 4

CIRCUITS						
	Circuit #	Condensor Fan AO	Suction Pressure	Discharge Pressure	Suction Temperature	Discharge Temperature
▶	1	Not Used	SUCT1	DISC1	SUCTTMP1	DISCTMP1
	2	Not Used	Not Used	Not Used	Not Used	Not Used
	3	Not Used	Not Used	Not Used	Not Used	Not Used
	4	Not Used	Not Used	Not Used	Not Used	Not Used
	5	Not Used	Not Used	Not Used	Not Used	Not Used
	6	Not Used	Not Used	Not Used	Not Used	Not Used
	7	Not Used	Not Used	Not Used	Not Used	Not Used
	8	Not Used	Not Used	Not Used	Not Used	Not Used

◆ Chiller V8 Information - Part 5

CIRCUITS							
	Circuit #	Oil Pressure	Oil Temp	Motor Amps	Motor Temp	Leaving Temp	
▶	1	DISC1	Not Used	AMPS1	Not Used	Not Used	↑
	2	Not Used	Not Used	Not Used	Not Used	Not Used	↑
	3	Not Used	Not Used	Not Used	Not Used	Not Used	↑
	4	Not Used	Not Used	Not Used	Not Used	Not Used	↑
	5	Not Used	Not Used	Not Used	Not Used	Not Used	↑
	6	Not Used	Not Used	Not Used	Not Used	Not Used	↑
	7	Not Used	Not Used	Not Used	Not Used	Not Used	↑
	8	Not Used	Not Used	Not Used	Not Used	Not Used	↓

◆ Chiller V8 Information - Part 6

CIRCUITS											
	Circuit #	Slide Closed (Comp Unload)	Second Liquid Line Solenoid?		Fast Unloader?		Oil Equalization?		LLS		HGI ▲
▶	1	Not Used	No	...	Yes	...	No	...	Yes	...	No
	2	Not Used	No	...	No	...	No	...	No	...	No
	3	Not Used	No	...	No	...	No	...	No	...	No
	4	Not Used	No	...	No	...	No	...	No	...	No
	5	Not Used	No	...	No	...	No	...	No	...	No
	6	Not Used	No	...	No	...	No	...	No	...	No
	7	Not Used	No	...	No	...	No	...	No	...	No
	8	Not Used	No	...	No	...	No	...	No	...	No

◆ Chiller V8 Information - Part 7

CIRCUITS								
	Circuit #	HGB		Number of Comps	Pump Down	Flow	Part Winding	Compre ▲
▶	1	No	...	1	PMPDOWN1	Not Used	No	... Not Use
	2	No	...	0	Not Used	Not Used	No	... Not Use
	3	No	...	0	Not Used	Not Used	No	... Not Use
	4	No	...	0	Not Used	Not Used	No	... Not Use
	5	No	...	0	Not Used	Not Used	No	... Not Use
	6	No	...	0	Not Used	Not Used	No	... Not Use
	7	No	...	0	Not Used	Not Used	No	... Not Use
	8	No	...	0	Not Used	Not Used	No	... Not Use ▼

◆ Chiller V8 Information - Part 8

CIRCUITS								
	Circuit #	Flow	Part Winding		Compressor Proof	Liquid Injection		Oil Seal Temp
▶	1	Not Used	No	...	Not Used	No	...	Not Used
	2	Not Used	No	...	Not Used	No	...	Not Used
	3	Not Used	No	...	Not Used	No	...	Not Used
	4	Not Used	No	...	Not Used	No	...	Not Used
	5	Not Used	No	...	Not Used	No	...	Not Used
	6	Not Used	No	...	Not Used	No	...	Not Used
	7	Not Used	No	...	Not Used	No	...	Not Used
	8	Not Used	No	...	Not Used	No	...	Not Used

◆ MCS-8 Info

MCS-8 Setup Screen			
Keypad Type	Chiller	Total Number of RO's	8
Default Display Key	SYSTEM TEMPERATURE	Total Number of AO's	0
Default Display Point	FLOW	Total Number of SI's	8
Display Units	English	Total Number of I/O's	0
Daylight Savings Time Active	<input checked="" type="radio"/> Yes <input type="radio"/> No	MCS Network Address	0
		Number of Thermostats	

◆ Setpoints - Part 1

#	Name	Value	Min	Max	Adjust Value	Time (Sec)	Lockout Delay Hrs.	Safety Down Time (min)	Active or Non-Active	Select Value: # decimals & print char	Level Of Auth. To Display	Type of Setpoint
1	TARGET TEMP	45	40	55	0.5	0		0	Active	TEMP	View Only	Setpoint
2	CTRL ZONE+	0.5	0.5	5	0.1	0		0	Active	TEMP	View Only	Setpoint
3	CTRL ZONE-	0.5	0.5	2	0.1	0		0	Active	TEMP	View Only	Setpoint
4	HGS TEMP ON	-0.5	-3	5	0.5	0		0	Non-Active	TEMP	View Only	Setpoint
5	HGS TEMP OFF	1	-3	5	0.5	0		0	Non-Active	TEMP	View Only	Setpoint
6	HGS PSI ON	57	50	70	1	0		0	Non-Active	PSI GAGE	View Only	Setpoint
7	HGS PSI OFF	62	52	70	1	0		0	Non-Active	PSI GAGE	View Only	Setpoint
8	L. INJECT ON	180	130	200	1	0		0	Non-Active	TEMP	View Only	Setpoint
9	OIL HEATR ON	120	100	140	1	0		0	Non-Active	TEMP	View Only	Setpoint
10	OIL COOLR ON	115	95	135	1	0		0	Non-Active	TEMP	View Only	Setpoint
11	STAGE 9 ON	5	0	5	0.1	0		0	Non-Active	VOLTS	View Only	Setpoint
12	STAGE 10 ON	5	0	5	0.1	0		0	Non-Active	VOLTS	View Only	Setpoint
13	STAGE 11 ON	5	0	5	0.1	0		0	Non-Active	VOLTS	View Only	Setpoint
14	STAGE 12 ON	5	0	5	0.1	0		0	Non-Active	VOLTS	View Only	Setpoint
15	STAGE 13 ON	5	0	5	0.1	0		0	Non-Active	VOLTS	View Only	Setpoint
16	STAGE 14 ON	5	0	5	0.1	0		0	Non-Active	VOLTS	View Only	Setpoint
17	STAGE 15 ON	5	0	5	0.1	0		0	Non-Active	VOLTS	View Only	Setpoint
18	STAGE 16 ON	5	0	5	0.1	0		0	Non-Active	VOLTS	View Only	Setpoint
19	BARREL HEATR	40	35	55	1	0		0	Non-Active	TEMP	View Only	Setpoint
20	SPARE-20	45	30	60	1	0		0	Non-Active	TEMP	View Only	Setpoint
21	MAX CW RESET	5	0	5	1	0		0	Non-Active	TEMP	View Only	Setpoint
22	LOW AMBIENT	30	20	60	1	0		0	Non-Active	TEMP	View Only	Setpoint
23	POWERUP DLAY	10	1	60	1	0		0	Active	SECONDS	View Only	Setpoint
24	HI AMBIENT	160	140	200	1	0		0	Non-Active	TEMP	View Only	Setpoint
25	STEP SENSIT	1	1	10	1	0		0	Active	DIGITAL/SW	View Only	Setpoint
26	STEP DELAY	180	120	500	1	0		0	Active	SECONDS	View Only	Setpoint
27	MAX ROC-	-0.6	-2	-0.1	0.1	0		0	Active	TEMP	View Only	Setpoint
28	MAX ROC+	0.6	1	2	0.1	0		0	Active	TEMP	View Only	Setpoint
29	ROC INTERVAL	45	15	60	1	0		0	Active	SECONDS	View Only	Setpoint
30	MAX SLIDE %	100	75	100	1	0		0	Active	HUMD or %	View Only	Setpoint

◆ Setpoints - Part 2

#	Name	Value	Min	Max	Adjust Value	Time (Sec)	Lockout Delay Hrs.	Safety Down Time (min)	Active or Non-Active	Select Value: # decimals & print char	Level Of Auth. To Display	Type of Setpoint
31	MIN SLIDE %	45	30	60	1	0		0	Active	... HUMD or %	View Only	Setpoint
32	MAX ADJUST %	10	5	20	1	0		0	Active	... HUMD or %	View Only	Setpoint
33	MIN ADJUST %	2	1	5	1	0		0	Active	... HUMD or %	View Only	Setpoint
34	SLIDE SENSIT	1	1	10	1	0		0	Active	... DIGITAL/S%	View Only	Setpoint
35	AMP DB HI	2	1	10	1	0		0	Active	... AMPS/CT	View Only	Setpoint
36	AMP DB LO	2	1	10	1	0		0	Active	... AMPS/CT	View Only	Setpoint
37	LOAD PULSE	5	1	10	1	0		0	Active	... DIGITAL/S%	View Only	Setpoint
38	UNLOAD PULSE	6	1	10	1	0		0	Active	... DIGITAL/S%	View Only	Setpoint
39	LUBE OIL TMP	100	80	100	1	0		0	Non-Active	... TEMP	View Only	Setpoint
40	LUBE OIL PSI	25	20	60	1	0		0	Non-Active	... PSI GAGE	View Only	Setpoint
41	LUBE DELAY	240	120	600	1	0		0	Non-Active	... SECONDS	View Only	Setpoint
42	SPARE-42	30	10	35	1	0		0	Non-Active	... SPARE	View Only	Setpoint
43	SPARE-43	0	0	0	1	0		0	Non-Active	... SPARE	View Only	Setpoint
44	SPARE-44	39	39	41	0	0		0	Non-Active	... SPARE	View Only	Setpoint
45	CND STG1 ON	190	170	220	5	0		0	Active	... PSI GAGE	View Only	Setpoint
46	CND STG1 OFF	160	140	180	5	0		0	Active	... PSI GAGE	View Only	Setpoint
47	CND DIFF ON	30	10	50	1	0		0	Active	... PSI GAGE	View Only	Setpoint
48	CND DIFF OFF	5	5	50	1	0		0	Active	... PSI GAGE	View Only	Setpoint
49	CND MIN RUN	1	0	5	1	0		0	Active	... MINUTES	View Only	Setpoint
50	CND VLV TARG	180	140	220	5	0		0	Non-Active	... PSI GAGE	View Only	Setpoint
51	CND VLV DIV	1	1	10	1	0		0	Non-Active	... DIGITAL/S%	View Only	Setpoint
52	CND VLV MIN	0	0	25	1	0		0	Non-Active	... HUMD or %	View Only	Setpoint
53	CND VLV ROC-	-5	-15	-1	1	0		0	Non-Active	... PSI GAGE	View Only	Setpoint
54	CND MIN SPD	30	15	50	1	0		0	Non-Active	... HUMD or %	View Only	Setpoint
55	CND MAX SPD	100	50	100	1	0		0	Non-Active	... HUMD or %	View Only	Setpoint
56	SPARE-56	0	0	0	0.1	0		0	Non-Active	... PSI GAGE	View Only	Setpoint
57	SPARE-57	0	0	0	1	0		0	Non-Active	... SPARE	View Only	Setpoint
58	SPARE-58	0	0	0	0	0		0	Non-Active	... SPARE	View Only	Setpoint
59	ANTICYC OFF	120	120	600	5	0		0	Active	... SECONDS	View Only	Setpoint
60	PMP DWN ON	80	70	90	1	0		0	Non-Active	... PSI GAGE	View Only	Setpoint

◆ Setpoints - Part 3

#	Name	Value	Min	Max	Adjust Value	Time (Sec)	Lockout Delay Hrs.	Safety Down Time (min)	Active or Non-Active	Select Value: # decimals & print char	Level Of Auth. To Display	Type of Setpoint
61	PMP DWN OFF	45	40	60	1	0		0	Active	... PSI GAGE	View Only	Setpoint
62	PMP DWN DLAY	10	1	60	1	0		0	Active	... SECONDS	View Only	Setpoint
63	ANTICYC ON	180	180	1200	1	0		0	Active	... SECONDS	View Only	Setpoint
64	COMP MIN RUN	1	1	5	1	0		0	Active	... MINUTES	View Only	Setpoint
65	FLA COMP#1	72	70	91	1	0		0	Active	... AMPS/CT	View Only	Setpoint
66	FLA COMP#2	72	70	91	1	0		0	Non-Active	... AMPS/CT	View Only	Setpoint
67	FLA COMP#3	72	70	91	1	0		0	Non-Active	... AMPS/CT	View Only	Setpoint
68	FLA COMP#4	72	70	91	1	0		0	Non-Active	... AMPS/CT	View Only	Setpoint
69	FLA COMP#5	80	35	90	1	0		0	Non-Active	... AMPS/CT	View Only	Setpoint
70	FLA COMP#6	80	35	90	1	0		0	Non-Active	... AMPS/CT	View Only	Setpoint
71	FLA COMP#7	80	35	90	1	0		0	Non-Active	... AMPS/CT	View Only	Setpoint
72	FLA COMP#8	80	35	90	1	0		0	Non-Active	... AMPS/CT	View Only	Setpoint
73	STARTER DLAY	1	0	5	1	0		0	Non-Active	... SECONDS	View Only	Setpoint
74	LEAD COMP	1	1	2	1	0		0	Non-Active	... DIGITAL/SW	View Only	Setpoint
75	HI AMPS %	110	105	125	1	10	2	10	Active	... HUMD or %	View Only	Lockout
76	LO AMPS %	15	15	40	1	10	2	10	Active	... HUMD or %	View Only	Lockout
77	LOW SUCTION	55	50	60	1	120	2	10	Active	... PSI GAGE	View Only	Lockout
78	LO SUCT UNLD	1	1	3	1	0		0	Active	... PSI GAGE	View Only	Setpoint
79	LO SUCT RELD	3	3	7	1	0		0	Active	... PSI GAGE	View Only	Setpoint
80	UNSAFE SUCT	20	0	30	1	2	2	10	Active	... PSI GAGE	View Only	Lockout
81	HI DISC PSI	360	300	360	1	2	2	10	Active	... PSI GAGE	View Only	Lockout
82	HI DISC UNLD	10	5	40	1	0		0	Active	... PSI GAGE	View Only	Setpoint
83	HI DISC RELD	20	10	60	1	0		0	Active	... PSI GAGE	View Only	Setpoint
84	SPARE-84	0	0	0	1	0	2	10	Non-Active	... PSI GAGE	View Only	Lockout
85	LO DISC PSI	120	80	120	1	30	2	10	Active	... PSI GAGE	View Only	Lockout
86	SPARE-86	0	0	0	1	0	2	10	Non-Active	... PSI GAGE	View Only	Lockout
87	HI DISCH TMP	230	210	235	1	2	2	10	Active	... TEMP	View Only	Lockout
88	HI DISC UNLD	3	1	10	1	0		0	Active	... TEMP	View Only	Setpoint
89	HI DISC RELD	5	3	15	1	0		0	Active	... TEMP	View Only	Setpoint
90	SPARE-90	0	0	0	1	0	2	10	Non-Active	... TEMP	View Only	Lockout

◆ Setpoints - Part 4

90	SPARE-90	0	0	0	1	0	2	10	Non-Active	...	TEMP	View Only	Lockout
91	LOW DIFF PSI	70	60	90	1	45	2	10	Active	...	PSI GAGE	View Only	Lockout
92	UNSAFE D.PSI	40	20	50	1	5	2	10	Active	...	PSI GAGE	View Only	Lockout
93	HI OIL SEAL	135	120	150	1	2	2	10	Non-Active	...	TEMP	View Only	Lockout
94	HI OIL TEMP	210	180	230	1	2	2	10	Non-Active	...	TEMP	View Only	Lockout
95	EXT.SAFETIES	0	0	0	1	2	2	10	Non-Active	...	DIGITAL/SW	View Only	Lockout
96	NO CMP PROOF	0	0	0	1	2	2	10	Non-Active	...	DIGITAL/SW	View Only	Lockout
97	DIRTY FILTER	20	10	50	1	60	2	10	Non-Active	...	PSI GAGE	View Only	Alarm
98	SPARE-98	0	0	0	1	0		0	Non-Active	...	SPARE	View Only	Setpoint
99	SPARE-99	0	0	0	1	0		0	Non-Active	...	SPARE	View Only	Setpoint
100	SPARE-100	0	0	0	1	2		0	Non-Active	...	SPARE	View Only	Setpoint
101	SPARE-101	0	0	0	1	2		0	Non-Active	...	SPARE	View Only	Setpoint
102	SPARE-102	30	10	30	5	2		0	Non-Active	...	SPARE	View Only	Setpoint
103	LEAD COMP	0	0	4	1	0		0	Non-Active	...	DIGITAL/SW	View Only	Setpoint
104	CMP ROTATION	1	0	7	1	0		0	Non-Active	...	DAYS	View Only	Setpoint
105	PUMP FAILURE	60	30	240	5	0		0	Non-Active	...	SECONDS	View Only	Setpoint
106	LEAD PUMP	1	1	1	1	0		0	Non-Active	...	DIGITAL/SW	View Only	Setpoint
107	PMP ROTATION	0	0	30	1	0	2	10	Non-Active	...	DAYS	View Only	Alarm
108	PMP OFF DLAY	30	30	600	1	0		0	Non-Active	...	SECONDS	View Only	Setpoint
109	SPARE-109	0	0	0	1	0		0	Non-Active	...	SPARE	View Only	Setpoint
110	SPARE-110	0	0	0	1	2		0	Non-Active	...	SPARE	View Only	Setpoint
111	FREEZE	38	36	40	1	2	2	10	Active	...	TEMP	View Only	Lockout
112	NO STOP	30	10	30	1	5	2	10	Active	...	HUMD or %	View Only	Lockout
113	SPARE-113	0	0	0	1	0	2	10	Non-Active	...	SPARE	View Only	Lockout
114	SPARE-114	0	0	0	1	0	2	10	Non-Active	...	SPARE	View Only	Lockout
115	SPARE-115	0	0	0	1	0	2	10	Non-Active	...	SPARE	View Only	Lockout
116	SPARE-116	0	0	0	1	0	2	10	Non-Active	...	SPARE	View Only	Lockout
117	SPARE-117	0	0	0	1	0	2	10	Non-Active	...	SPARE	View Only	Lockout
118	SPARE-118	0	0	0	1	0	2	10	Non-Active	...	SPARE	View Only	Lockout
119	SPARE-119	0	0	0	1	0	2	10	Non-Active	...	SPARE	View Only	Lockout
120	SPARE-120	0	0	0	1	0	2	10	Non-Active	...	SPARE	View Only	Lockout

◆ Authorization

Authorizations Information Screen

#	Code	Level
▶ 1	3224	Factory Level
2	2113	Supervisor Level
3	1882	Service Level
4	0000	View Only
5	0000	View Only
6	0000	View Only
7	0000	View Only
8	0000	View Only
9	0000	View Only
10	0000	View Only

◆ Schedules

Holiday Dates				
Holiday Number	Month (0 inactivates holiday)	Day of Month		
1	0	1		
2	0	1		
3	0	1		
4	0	1		
5	0	1		
6	0	1		
7	0	1		
8	0	1		

Daily Operating Schedules										
Day of Week	Sched #1 On		Sched #1 Off		▶	Day of Week	Sched #2 On		Sched #2 Off	
	Hour	Minute	Hour	Minute			Hour	Minute	Hour	Minute
Sunday	0	0	24	0	▶	Sunday	0	0	24	0
Monday	0	0	24	0		Monday	0	0	24	0
Tuesday	0	0	24	0		Tuesday	0	0	24	0
Wednesday	0	0	24	0		Wednesday	0	0	24	0
Thursday	0	0	24	0		Thursday	0	0	24	0
Friday	0	0	24	0		Friday	0	0	24	0
Saturday	0	0	24	0		Saturday	0	0	24	0
** Holiday **	0	0	24	0		** Holiday **	0	0	24	0