



APPLICATION NOTE

APP #130

Setting up Network on Touchscreen

Table of Contents

Capacitive Touch	2 to 4
Resistive Touch	5 to 9

Identifying your Touchscreen Serial Number by Label

1.1. Location for Serial Numbers - RESISTIVE TOUCHSCREEN:



RESISTIVE TOUCHSCREEN
NO QR CODE ON THESE LABELS

1.2. Location for Serial Numbers - CAPACITIVE TOUCHSCREEN

Serial #'s 2976 & above



CAPACITIVE TOUCHSCREEN
QR CODE ON THESE LABELS

Click on the QR code or link below for more information.

<https://mcscontrols.com/software.html#mcsTouchSW>

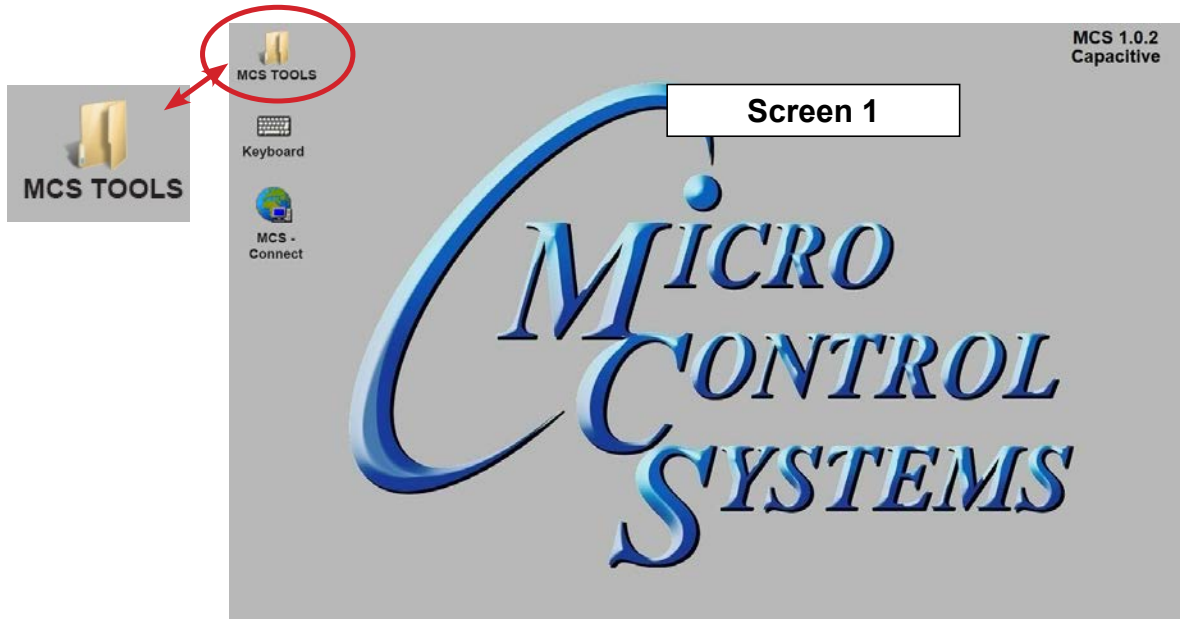


Click or scan with mobile for more information.

Setting Up Network CAPACITIVE TOUCHSCREEN

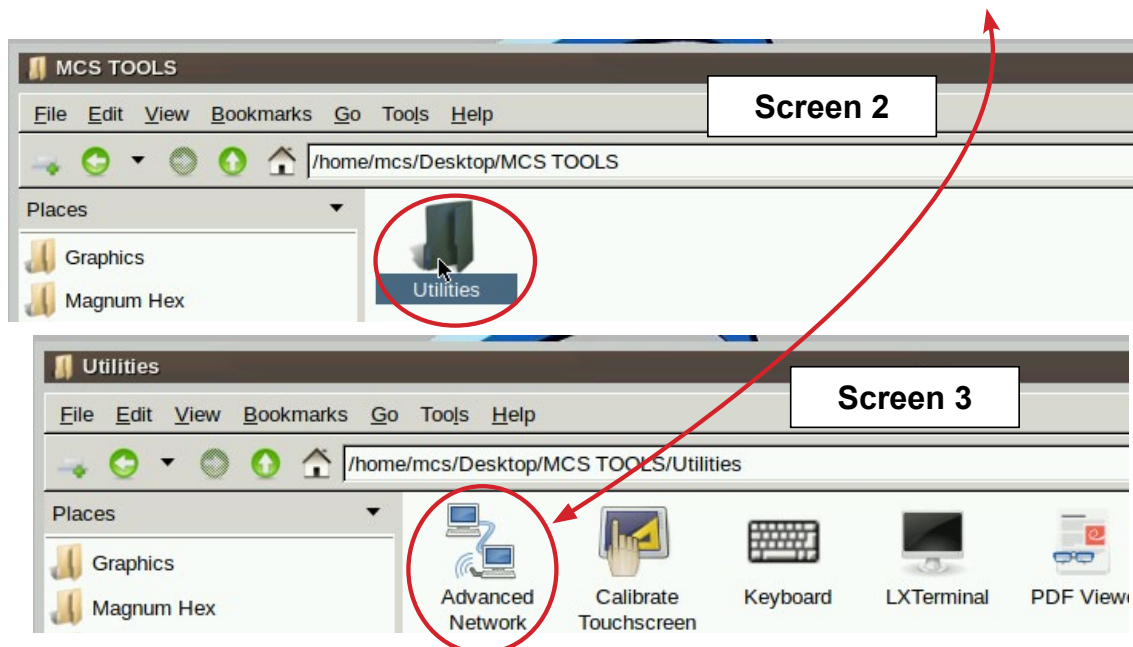
5.1. Setting Up Network For Communication With Your Controller

At the touchscreen main screen, click on 'MCS TOOLS' **folder** as seen screen 1.



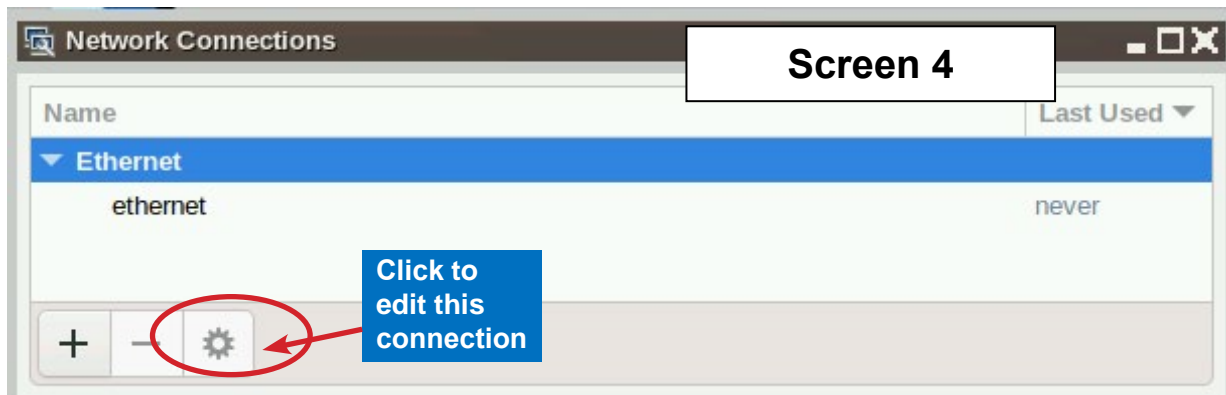
5.2. Utilities Folder

Screen 2 appears, click on 'Utilities' to view contents of that folder, then click on 'Advanced Network' as shown in screen 3.



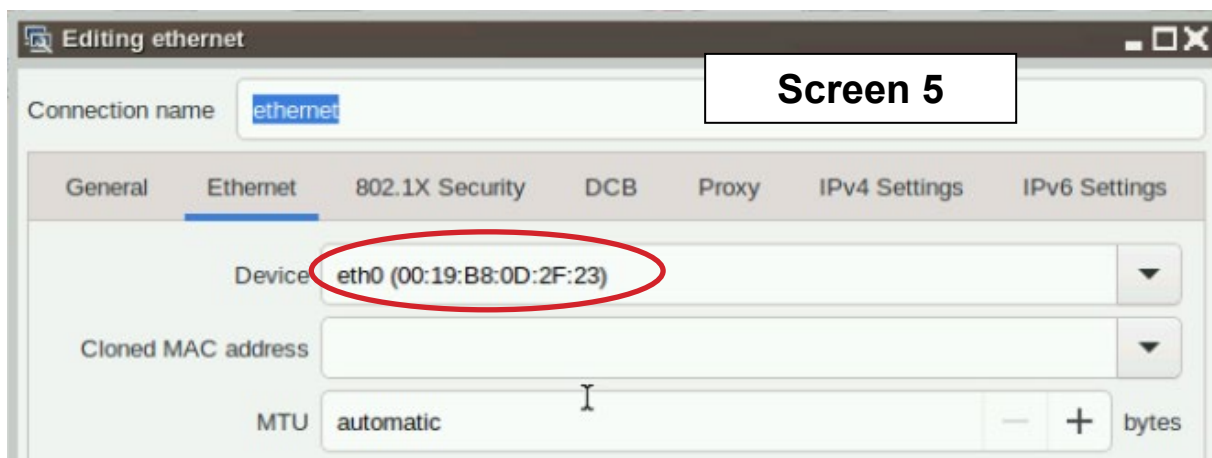
5.2.1 Advanced Network Screen

Next display, screen 4 shows network communication screen. Your touchscreen will show 'Ethernet', click on the gear as shown below.



5.2.1.1. Selecting a Ethernet Port (screen 5)

1. Go to the Ethernet tab.
2. Click the drop down arrow on the right side of "Device"
3. Select the MAC address that has (eth*) at the end. (The number at the end varies).



Continue to the next page

5.2.1.2. Setting a 'Static IP Address'

On screen 7, click on 'IPv4 Settings'. Then to set a static IP address change the Method to 'Manual'. Create a new IP address by clicking under the 'Address' column. Enter the IP address (Address), Subnet Mask (Netmask), and Default Gateway (Gateway). Then click 'Save' to save these settings. The touchscreen will have to be rebooted for these settings to take effect.

Screen 7

Editing ethernet

Connection name: ethernet

General Ethernet 802.1X Security DCB Proxy **IPv4 Settings** IPv6 Settings

Method: Manual

Addresses

Address	Netmask	Gateway
192.168.18.151	24	192.168.18.1

DNS server:

Search domain:

DHCP client ID:

☐ Require IPv4 addressing for this connection to complete

Routes...

Click to save

Cancel Save

Click on drop down arrow, set to 'Manual'

Click on IPv4

Enter IP address, Netmask & Gateway Address



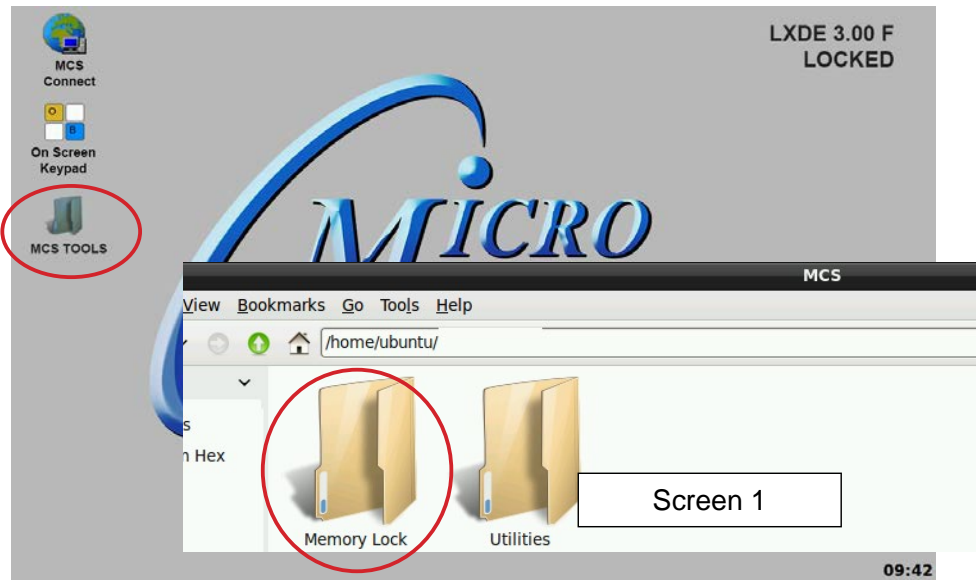
Note:

Subnet Mask will change to it's CIDR form, e.g., 255.255.255.0 is the equivalent to 24 in CIDR notation.

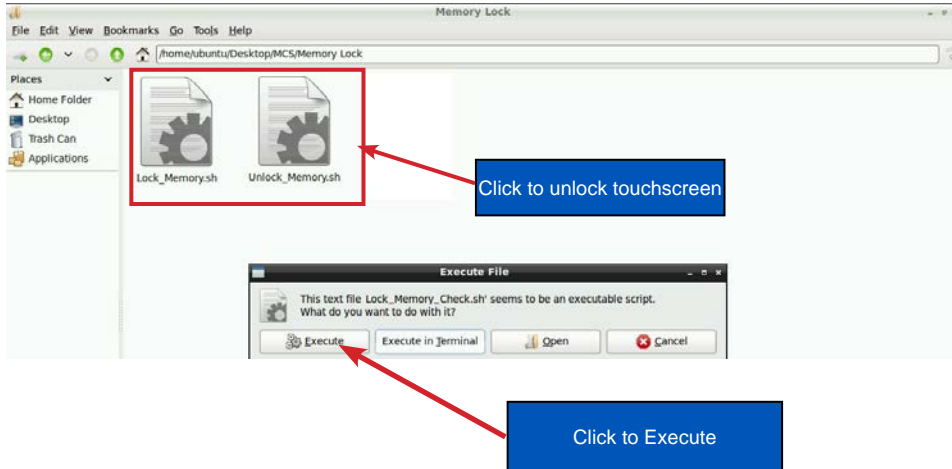
Setting Up Network RESISTIVE TOUCHSCREEN

Unlock the Touchscreen

1. Navigate to the 'Desktop', click on 'MCS TOOLS'.



2. Click on the 'Memory Lock folder' screen 1.
3. Double click the 'Unlock_Memory.sh'



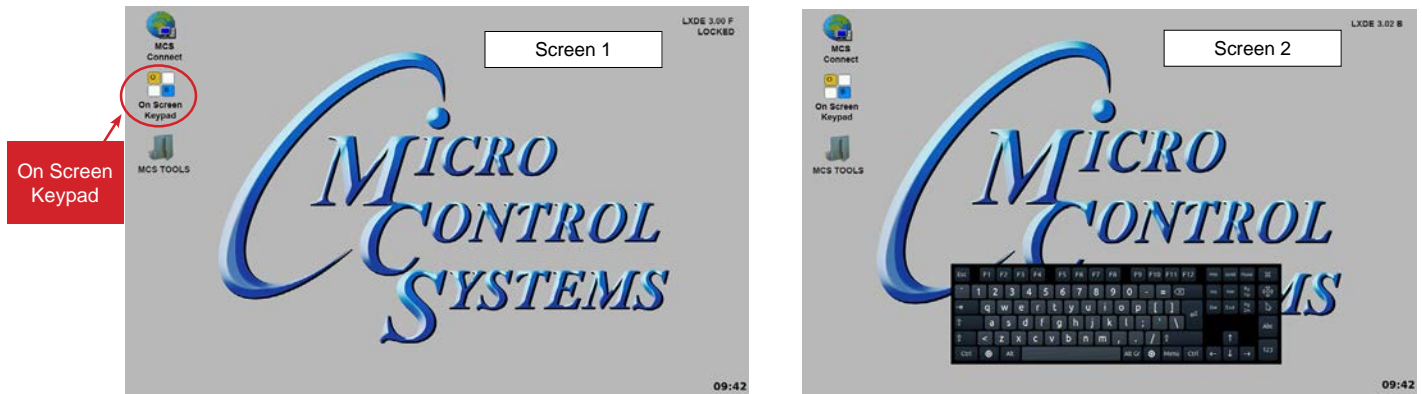
4. Click 'Execute'
5. The touchscreen will reboot and show unlocked at the top right corner.



1. KEYPAD - On the main screen, click on Keypad Icon as shown in screen 1.

'ON SCREEN KEYPAD'

Screen 2 shows keypad display. Use the stylus and keypad to enter or make adjustments.



Changing the IP address for the Touchscreen to communicate with your Company's Network using Ethernet.



1. At the touchscreen main screen, click on '**MCS TOOLS**' folder' as seen in screen 1.

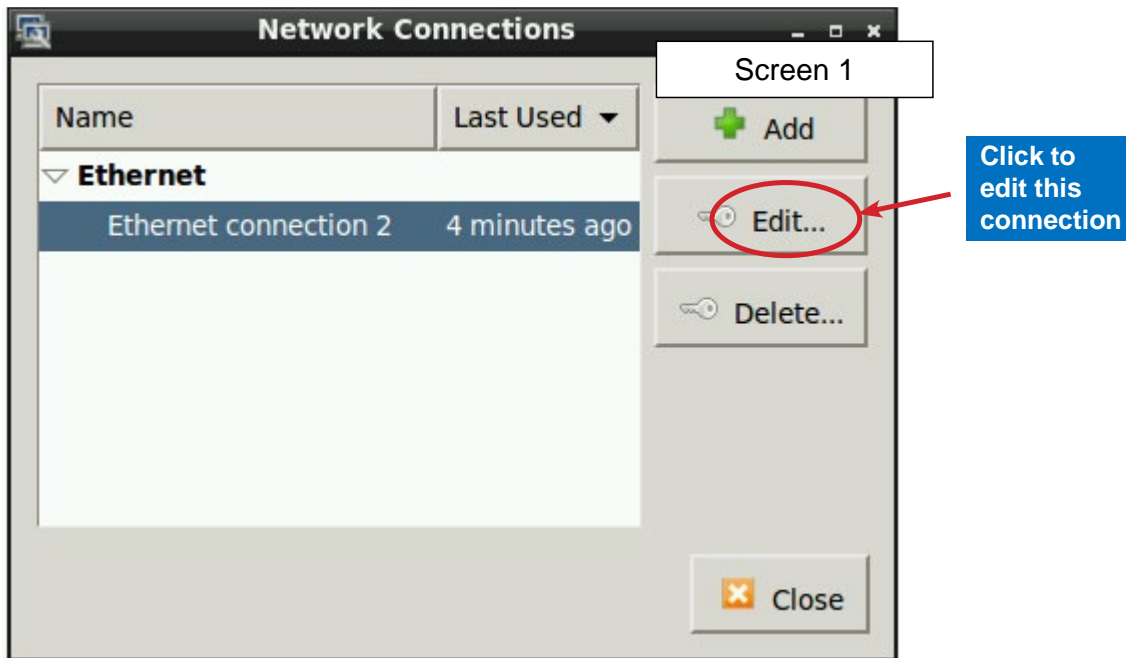
UTILITIES FOLDER

1. Screen 2 appears, click on 'Utilities' to view contents of folder.
2. Click on '**Network Connections**' as shown in screen 3.



Network Connections Screen

1. Next display, screen 1 shows network connections screen.
2. Your touchscreen will show
3. **'Ethernet connection'**, click to highlight.
4. Click on **'Edit'**



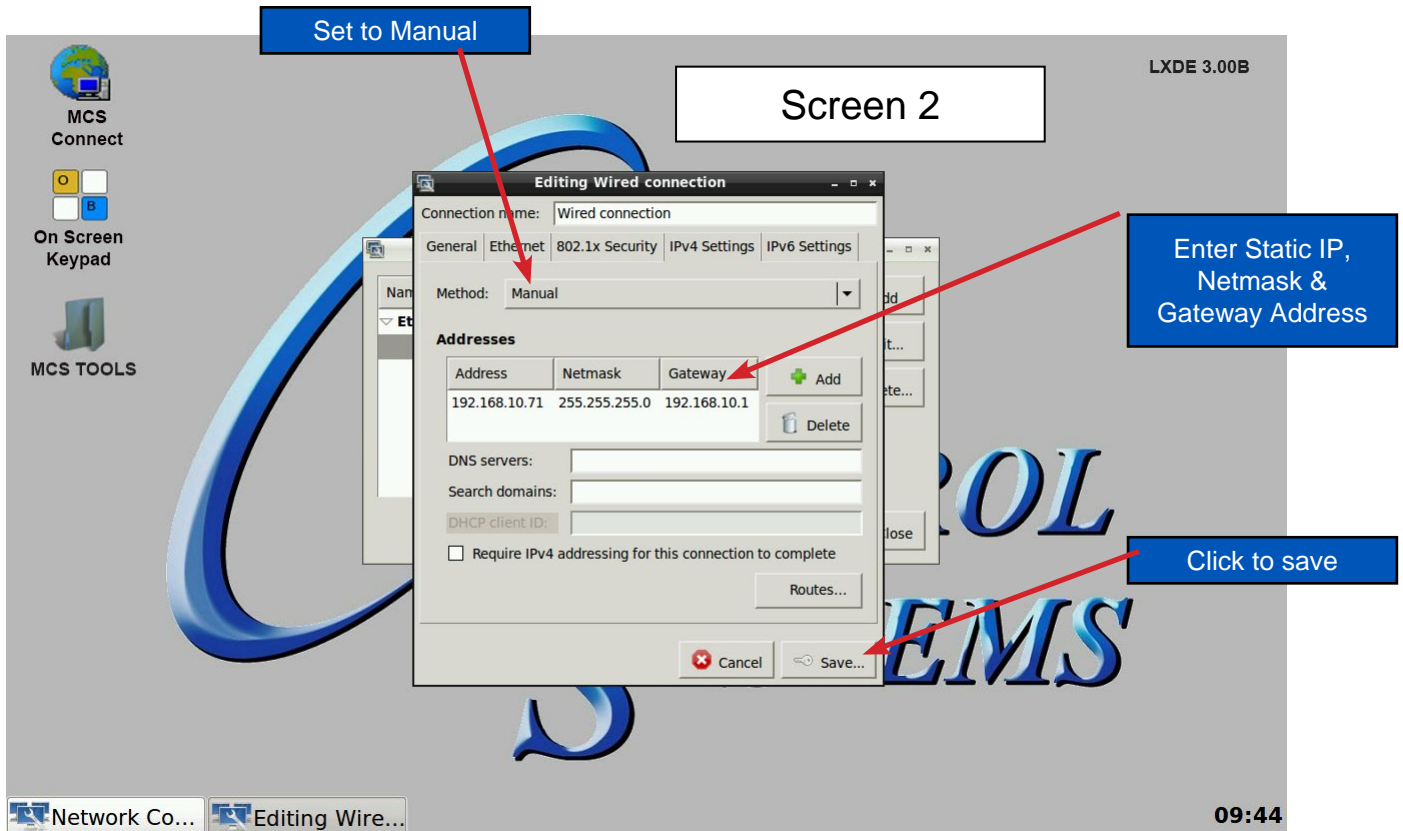
Selecting a Device MAC address

1. **Go to the Ethernet tab.**
2. **Click the drop down arrow on the right side of "Device MAC address:"**
3. **Select the MAC address that has (eth*) at the end. (The number at the end varies).**



Adding IP Address

On screen 2. click on IPV4, than set 'Method' to 'Manual' than click on 'Address', enter the IP address, netmask and gateway addresses. Click to save to touchscreen memory.



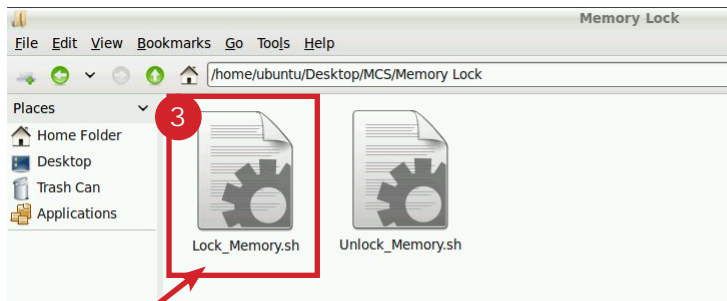
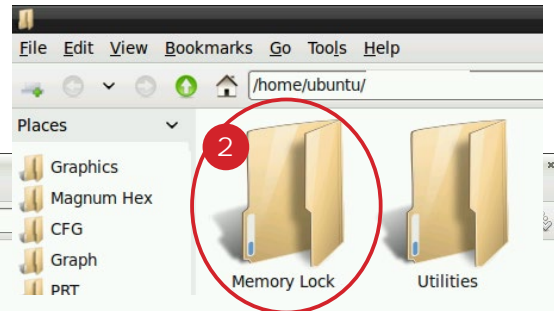
NOTE: YOU MUST EDIT THE AUTO START ADDRESS

[Click here - APP108 - MCS-TOUCH OPERATING SYSTEM](#)

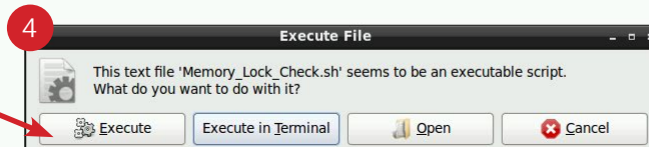
Re-Locking Touchscreen



1. Double click the 'MCS TOOLS' Icon on the Desktop.
2. Double click 'Memory Lock' sub directory.
3. Double click 'Lock Memory'.
4. Click 'EXECUTE'. The touchscreen will reboot.



Click to LOCK touchscreen
Click to Execute



Revision History

Date	Author	Description
10-19-17	DEW	Setup from Touchscreen Manual
09-30-19	DEW	edits made as per Bret
04-8-2020	DEW	combine APP 129 AND 127 as per Bret
06-30-2020	DEW	Make changes to APP 129
10-01-2021	CH	Add Mac Address change
07-03-2024	DEW	Change APP include CAP & Resistive
07-09-2024	DEW	Changes updated from Touch manual
07-30-2024	DEW	Change screen 5 on network for cap
07-31-2024	DEW	Identify touchscreen with lable