

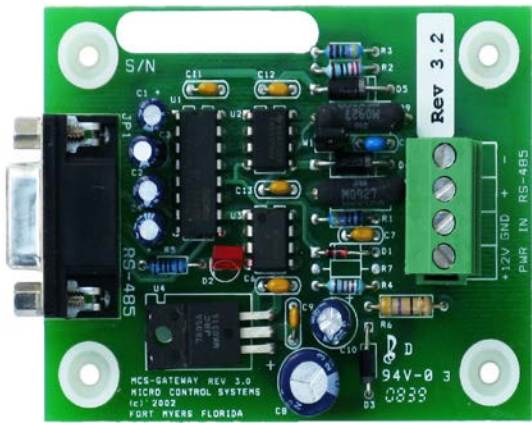


The MODEM-MAG-115

Description & Specifications



Part # **MODEM-MAG-115**



Part# **MCS-485-GATEWAY**

Specifications

MODEM:

Dimensions.....	6"w, 1.22"h, 4.72"d
Data	V.90, V.34, V.32bis, V.32 V.22bis, V.22, V.23, V.21 Bell 103/212
Error Control	V.42, MNP2-4
Data Compression.....	V.42bis, MNP5
Indicators	9 LED status indicators:
	PWR Power On
	TD Transmit Data
	RD Receive Data
	OH Off Hook
	CD Carrier Detect
	TR Terminal Ready
	AA Auto Answer
	56K V.90 or V.92 mode
	V34 V.34 mode
Phone Interface	Standard (RJ-11) telephone jacks for telephone and line connections

MCS-485-GATEWAY:

Package Dimensions:	
Width	2.50"
Length.....	3.47"
Height	1.04"
Mounting Holes.....	4 holes using #6 screws through nylon collars at corners of board
RS-485 Connection	4 pole 5mm removable connector block with +12V, GND, RS-485 (+) & RS-485 (-)
RS-232 Connection	9 pin female Sub-D
Baud Rate (Standard).....	19,200 baud
Power Required.....	60mA @ 12vdc
Operating Temperature.....	-40°F to +175°F (-40°C to +80°C)
Storage Temperature.....	-40°F to +175°F (-40°C to +80°C)
Supplied Accessories	AC Adapter, MCS-Surge Protector MCS-M9-M25 cable RJ-11 phone cable 4 wire shielded cable Wiring Guide

Option

-230	90 to 264vac input power @ 47 to 63Hz
-------------------	--

Description

The **MODEM-MAG-115** is part of the hardware for the MCS Support System. Located on-site, its purpose is to provide a means for remote communication with MCS micro controllers, either stand-alone or as part of a network.

By using **MCS-CONNECT** software you can dial out from your PC and into the MODEM-MAG which, once it answers, will connect you with a MCS micro controller. Once connected, you can interact with the micro controller in real time. The supplied **MCS-M9-M25** cable connects the MODEM-MAG-115 directly to a MCS Controller.

The MODEM-MAG-115 is pre-programmed at MCS for use with MCS Controllers.

Package Includes an **MCS-485-GATEWAY**.

The MCS-485-GATEWAY is a communications bridge between the signal levels and protocols of RS-485 and RS-232. It is primarily intended for establishing half-duplex, 2-wire communication between MCS micro controllers and a local PC, MODEM-MAG-115 or MCS-ETHERNET, either stand alone or as part of a network.

Revision 2015-05-07